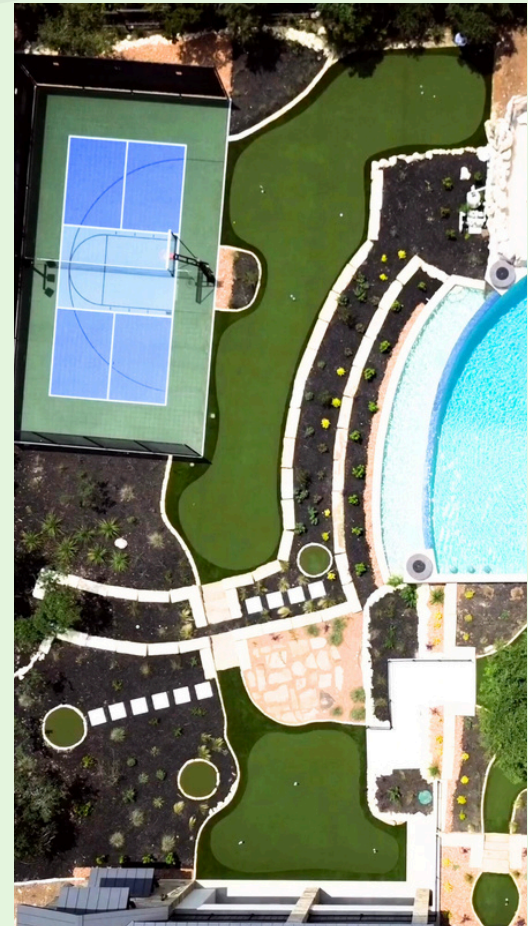




**SYNLAWN®**

The only **plant-based** artificial grass!

# ARTIFICIAL GRASS BUYER'S GUIDE



*Everything you need to know  
before purchasing artificial grass!*

[www.synlawnsacramento.com](http://www.synlawnsacramento.com)

(866) 970-3076

# TABLE OF CONTENTS



<b>Research Your Choice for Artificial Grass.....</b>	<b>1</b>
<b>The Greenest Turf on Earth.....</b>	<b>2</b>
<b>Safe for the Environment &amp; USDA Certified Options.....</b>	<b>3</b>
<b>Important Factors to Consider.....</b>	<b>4</b>
<b>Turf Fiber Quality &amp; Super Yarn™ Technology.....</b>	<b>5</b>
<b>Trionic Plus™ Technology.....</b>	<b>6</b>
<b>Fade &amp; Heat Resistance.....</b>	<b>7</b>
<b>Fire Safety &amp; Roof, Deck, Patio Installation.....</b>	<b>8</b>
<b>Drainage &amp; Pet-Friendly Artificial Grass.....</b>	<b>9</b>
<b>Odor Factor.....</b>	<b>10</b>
<b>Time &amp; Money Savings.....</b>	<b>11</b>
<b>Warranty &amp; Refresh Program.....</b>	<b>12</b>
<b>Made in the USA &amp; Bio Preferred Program.....</b>	<b>13</b>
<b>Pricing &amp; Financing Options.....</b>	<b>14</b>
<b>Putting Greens.....</b>	<b>15</b>
<b>The Importance of a GreensMaster™ Certified Installer.....</b>	<b>16</b>
<b>Playgrounds.....</b>	<b>17</b>
<b>Sport Surfacing, Athletic Fields, &amp; Bocce Ball Courts.....</b>	<b>18</b>
<b>The Importance of Proper Installation Techniques.....</b>	<b>19</b>
<b>Shaded Areas, Mounding, &amp; Sloped Areas.....</b>	<b>20</b>
<b>Pool Decks &amp; Surroundings.....</b>	<b>21</b>
<b>So, Where Does SYNLawn® Rank in All of This?.....</b>	<b>22</b>
<b>What Our Customers Are Saying.....</b>	<b>23</b>
<b>Before &amp; After.....</b>	<b>24</b>
<b>Contractors &amp; Architects.....</b>	<b>25</b>
<b>Schedule a Free Consultation.....</b>	<b>26</b>



UP TO 70%  
WATER SAVINGS



PLANT BASED &  
RECYCLABLE



USDA  
CERTIFIED



LOW MONTHLY  
PAYMENTS



UNRIVALED  
REALISM



PROUDLY  
MADE IN THE USA



MANUFACTURED  
PFAS FREE





# RESEARCH YOUR CHOICE FOR ARTIFICIAL GRASS



## **Are you looking to replace your landscape with artificial grass, but are not sure where to start?**

Begin by researching the company thoroughly. Explore online reviews to understand customer feedback. Look into the associations, groups, or certifications the company is affiliated with. Assess the duration of their presence in the business. If it is less than a decade, it is advisable to seek out a more established company. Prioritize those who are licensed, bonded, and committed to delivering durable, high-quality artificial turf over the long term.

SYNLawn® is a pioneer in the artificial grass industry. Since 1965, the SYNLawn family of synthetic turf products has been made and distributed under the AstroTurf brand name to professional and collegiate companies around the globe. The SYNLawn brand name was adopted in 2003 and has been used in commercial and residential applications ever since.

**We have over 50 years of research and development instilled in our artificial grass and thousands of 5-star reviews from happy customers.** SYNLawn is a proud member of the International Playground Equipment Manufacturers Association (IPEMA), Green Business Bureau, Synthetic Turf Council, American Society of Landscape Architects, The American Institute of Architects (AIA), US Green Building Council, United Soybean Board (USB), and General Services Administration (GSA), to name a few. SYNLawn® is also ISO 9001 certified, which is the world's most widely recognized quality management standard created to help organizations meet the expectations and needs of their customers.



**We did our due diligence when looking into having artificial turf installed. SYNLawn had great reviews, great product, and gave us no reason to go anywhere else. Mario came out to give a quote, and show us samples on the same day I initially called. Our installation was done the next day. I would 100% recommend giving them a call before thinking about having anyone else do your install. They're professional, fast, and we love our new "no maintenance" lawn! - Ron A.**



## Is there a showroom that you can tour?

Seeing and feeling the turf will give you an idea of the quality and allow you to see the level of professionalism they employ. If they do not have a showroom, you may find yourself in an undesirable situation later on down the road. **SYNLawn has showrooms all throughout the US including San Diego, Seattle, Sacramento, Dallas, Houston, New Braunfels, Tampa, and many more.** Some may be by appointment only.



# THE GREENEST TURF ON EARTH



## MANUFACTURED PFAS-FREE

PFAS, or per- and poly-fluoroalkyl substances, are a classification of man-made chemicals that are toxic to the human body and are found in many of the most common household items. Also known as “forever chemicals,” PFAS are capable of surviving for centuries without deteriorating. These chemicals are also responsible for several severe health risks including neurotoxicity, immunotoxicity, liver and thyroid issues, developmental disorders, metabolic disruption and more. SYNLawn and its parent company, SportGroup®, continue to invest time and money into preserving the quality and safety of our turf.

**As a result, SYNLawn has become one of the first turf companies to offer synthetic grass that is manufactured PFAS-free!**

*SportGroup® is ranked in the top 6% worldwide and #1 in the industry for sustainability according to the independent Morningstar Sustainalytics ESG Rating!*





## SAFE FOR THE ENVIRONMENT

As part of SYNLawn's leadership role as the safest, cleanest, and greenest turf manufacturer, SYNLawn® has taken measurable steps to reduce its overall carbon footprint by developing innovative ways to use renewable resources. One of the major components in SYNLawn® turf products is the use of sustainable soybeans to replace traditional petroleum polyols found in traditional turf backing systems. Confidently, **there is no other synthetic grass company that does more and invests more in creating products that respect and protect the earth.**

## USDA-CERTIFIED OPTIONS

Since 2008, SYNLawn has worked closely with American farmers to become **the first provider of USDA-certified turf options for the use of bio-based materials in our turf compositions.** Together, we locally source renewable soybeans and sugar cane to develop our turf fibers and backing system. Through quality control and tireless exploration of environmental opportunities, we proudly offer synthetic turf options that replace more than 60-80% of components such as petroleum used in traditional turf, with renewable plant-based materials. In doing so, we are the only company to offer a growing collection of USDA-certified options that contain up to 80% bio-based content when combined with our exclusive EnviroLoc+™ backing system and Envirofill® infill.



**Eliminate up to 70% of your water consumption.**



**Manufactured with renewable soybeans & sugar cane.**



**Save thousands of gallons of water annually.**



**Recyclability & superior product lifespan help to reduce the local landfill impact.**



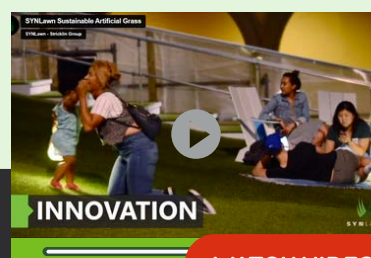
**Reduce carbon emissions by eliminating the need for gas-powered lawn mowers.**



**We are the first & only synthetic grass company to receive certifications from the USDA!**

Traditional grass requires fertilizers, herbicides, and pesticides that can pollute our water supply and damage the environment. SYNLawn synthetic grass is free of harsh chemicals, fertilizers, and pesticides and helps conserve water, reduce carbon emissions, and local landfill impact. **On average, switching to synthetic turf from SYNLawn can help you conserve substantial amounts of your monthly water consumption.**

**This also means that you will be able to save up to 50-70% on your water bill.**



**WATCH VIDEO**

**Click the *video icon* to watch our sustainability video!**

# IMPORTANT FACTORS TO CONSIDER



## LEVEL OF REALISM

Today, the most advanced synthetic turf is incredibly realistic when compared to its original design. Although higher-end turf may be more expensive, it is worth the extra expense when your artificial lawn looks true to life. High-quality turf should exhibit color variations and natural-looking pigmentation, complemented by supporting fibers known as thatch, to establish a lush, beautiful, and vibrant lawn.

**SYNLawn easily provides the most realistic artificial turf in the industry.** We have developed synthetic turf that replicates the appearance and behavior of natural grass as closely as possible. So much so that landscapers have been fooled enough to try and mow it. This unrivaled realism is thanks to our more than 50 years of R&D, over 20 years of installation experience, and inspiration from nature and our customers.

## DURABILITY

Artificial turf gains enhanced sustainability through increased durability. A reputable company will present a range of turf types or variations tailored to specific uses. Specialized turf options are available for areas that experience higher foot traffic. The widespread issue of installing inappropriate turf for intended use is a common challenge in the industry.



The SYNLawn exclusive EnviroLoc+™ backing system uses a durable 2-part woven polypropylene backing fabric constructed to lock in tufted grass fibers. After tufting, the backing fabric and stitched grass fibers receive a thick layer of SYNLawn's proprietary bio-based EnviroLoc™ coating. Together, these components provide a sturdy anchor for fibers, creating less "shedding," resulting in an environmentally responsible approach to tougher synthetic grass. **SYNLawn offers the most durable turf selection on the market!**



Click the **video icon** to watch our **EnviroLoc+ backing video!**



## TURF FIBER QUALITY

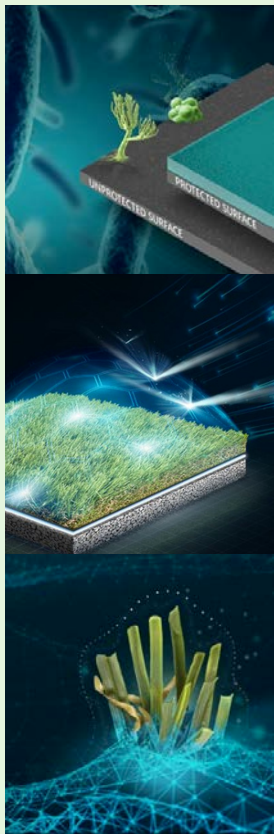
Many traditional artificial grass brands, especially those manufactured overseas, struggle to support a long installation lifespan. This is often due to the quality of the turf surface fibers, also referred to as the turf blades. Many fibers deteriorate with frequent use, degrade in the sun, fade, accumulate bacteria, shed from its backing, transfer static electricity and more. This is why traditional turf installations only last 10-20 years or less.

At SYNLawn, we offer a first-of-its kind turf yarn formula called Super Yarn™ that was engineered to alleviate many of these turf obstacles to ensure that our installations can last over 20 years.



### SUPER YARN™ TECHNOLOGY

The Super Yarn turf yarn formula combines three state-of-the-art turf technologies at the molecular level to create the most resilient turf fiber in the world. With Super Yarn, **SYNLawn is easily the cleanest, safest, and greenest turf on the market.**



#### SANITIZED® SILVER-BASED TECHNOLOGY

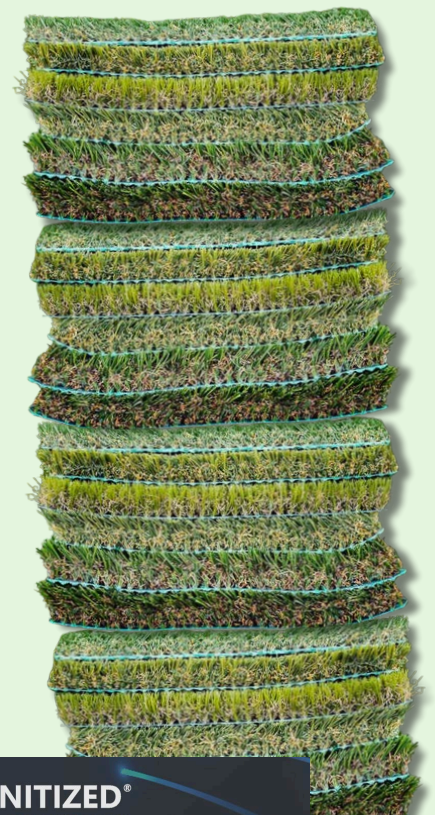
- Helps eliminate bacteria & odors
- Protects against fungi, mold, mildew, and bacterial growth

#### DUALCHILL™ THERMAL SHIELD

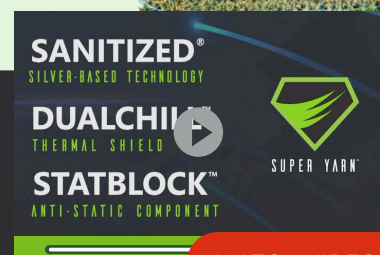
- Protects turf from infrared light
- Strengthens the fibers
- Up to 42% reduction in IR reflectivity

#### STATBLOCK™ ANTI-STATIC COMPONENT

- Inhibits buildup of static electricity
- The industry's first DNA level addition
- Up to 17 times reduction of static levels



Click the **video icon** to watch our **Super Yarn video!**

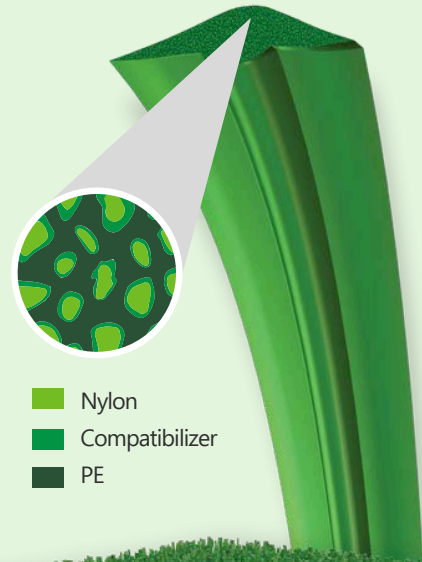


**WATCH VIDEO**



# NOW INTRODUCING TRIONIC PLUS™ POWERED BY SYNSPORT™

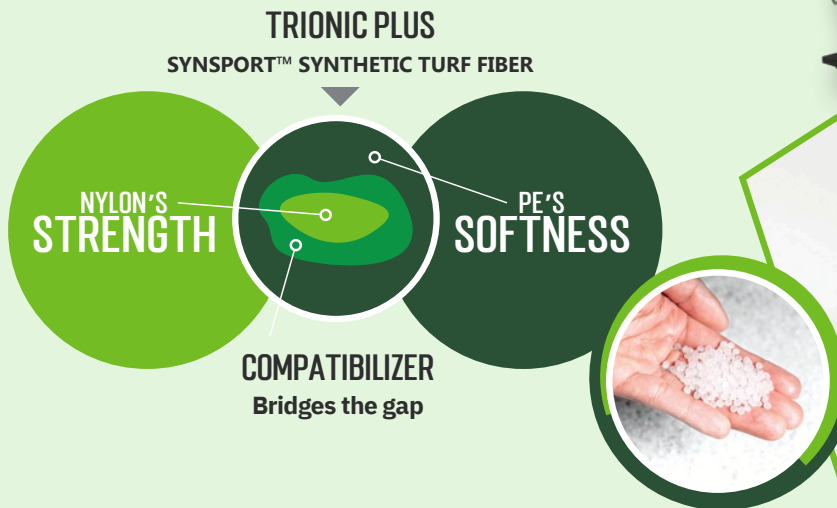
We have developed a super molecular fusion of Nylon and PE. Throughout the history of the synthetic turf industry, the great quest of manufacturers has been to blend the softness of polyethylene (PE) and the extreme durability of Nylon in a single fiber. This has never been done before...**until now.**



- Nylon
- Compatibilizer
- PE

## WHY IS THIS MONUMENTAL?

TRIONIC PLUS blends the best of both fibers into a single fiber.



## WHY WAS IT SO DIFFICULT?

Chemically speaking, PE and nylon are like oil and water. They do not mix. The reason has to do with polarity. PE (like oil) is non-polar, while nylon (like water) is polar.



### PE AND NYLON REPEL EACH OTHER.

That's why efforts to mix the polymers into a single fiber have always failed – until now.

## SO HOW DID WE BLEND THEM?

Trionic Plus is a quantum leap in the advancement of synthetic turf products. Polyethylene and nylon molecules are fused into a co-polymer and then extruded as a single fiber to produce Trionic Plus. The secret is in the compatibilizers. These compatibilizers encase the Nylon polymers, which are suspended within the PE to reinforce the fiber. The compatibilizer compounds are compatible with both the PE and the Nylon. They are polar on the inside, and non-polar on the outside. In essence, the compatibilizers bridge the gap.

## THE PLUS IN TRIONIC PLUS™

FEATURES

SUPER YARN™ TECHNOLOGY

ENVIROLOC+ BACKING SYSTEM







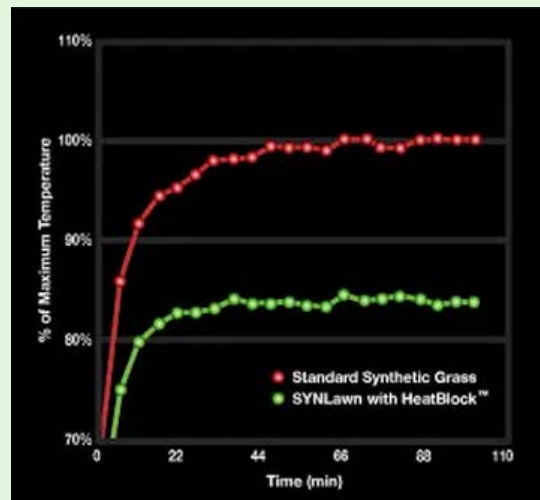
## HIGH-QUALITY ARTIFICIAL GRASS CAN RESIST FADING IN THE SUN

The unfortunate truth is that traditional artificial turf has the potential to fade and melt in the sun, particularly if it's manufactured internationally. When having your turf installed near windows, it is crucial to employ window screens, tints, or protective films to avert potential problems.

**SYNLawn premium turf is not only made in the USA but also engineered to be resistant to UV and infrared light.** Additionally, our SYNRe 200 turf option carries the strongest warranty against reflective light protecting your investment for the long term! SYNLawn turf technology prevents fading, and we back up your investment with a limited lifetime warranty.

## HEAT RESISTANCE

Most companies will provide a unique heat rating. You will want to seek out a company equipped with advanced technologies designed to counteract heat buildup. While many companies claim that their turf is heat-resistant, it is not recommended to take this at face value. Unless they can provide you with details on how their turf is resistant to high temperatures, it's safer to assume that it is not.



Heat buildup occurs in most materials when thermal energy hits the surface of an object. Emissivity is the scientific term for the degree to which a material emits heat. In the same way that dark clothing absorbs more heat than light clothing, synthetic turf can also hold in and emit heat, making it uncomfortable when temperatures are hot outside.

At SYNLawn, we utilize our exclusive HeatBlock™ technology. **HeatBlock is scientifically proven to keep surface temperatures up to 20% cooler than other turf brands on the market.** It actively combats heat emissivity by reflecting infrared light. Additionally, you can combine HeatBlock with eco-friendly, heat reducing infill options to further reduce surface temperatures. This means that even during the warmest summers, you can get much more enjoyment out of your lawn.



## FIRE-RATING AND SAFETY

There are plenty of manufacturers that claim to offer fire-safe synthetic grass. While this might be true, it is important to research what makes those turf options safe. SYNLawn® is proud to offer a collection of fire-safe artificial turf options that have achieved an ASTM Class A fire rating. To meet the criteria for this classification, turf must pass eight unique burn and melt tests to prove that it can help prevent the spread of fires. Instead of fueling a fire, our artificial grass will simply melt and blacken, preventing extreme property damage and potentially fatal injuries.

**In 2016, SYNLawn turf was credited with helping to contain a fire that broke out on the roof of The Cosmopolitan Hotel in Las Vegas.**

Click the *video icon* to see our turf in action!



Flames spread faster on the natural turf

WATCH VIDEO



## ROOFTOP, DECK, AND PATIO INSTALLATION

Installing artificial on a rooftop, deck, or patio is a great way to make use of underutilized or awkward space. However, manufacturers must consider factors including sun exposure, and fire safety to ensure that it will last and keep those who use it safe.

SYNLawn® synthetic turf is designed to resist fading year-round, regardless of the amount of sun it gets. Our UV-stabilized yarns and DualChill™ keep IR light from draining your lawn of its gorgeous green glow. In addition, our rooftop collection is Class A fire-rated to enhance safety while enjoying time in your new favorite gathering place.





## DRAINAGE

Whether you live in a rainy climate or have pets that will be enjoying the turf, drainage is a very important factor to consider when choosing an artificial grass. Turf brands with poor drainage can create more lawn challenges. Stains and odors from pet waste, muddy paws, surface fiber degradation, mold, mildew, and bacterial growth are just a few common complaints associated with improper drainage. Many turf brands claim sufficient drainage with the use of microscopic drains in the backing; however, they don't consider the environmental debris that clogs those microscopic drains over time. Similar to a used coffee filter.



SYNLawn presents its exclusive Super Drain+™ technology found in our EnviroLoc+ backing system. Through ASTM water permeability testing, **Super Drain+ is proven to demonstrate an impressive unmatched drainage rate of up to 1,200 inches per hour.** This rate is 40 times higher than the highest recorded rainfall at one time in the USA. This technology was engineered to provide immediate drainage and with environmental debris in mind to ensure optimal drainage for decades to come.

## PET-FRIENDLY ARTIFICIAL GRASS

Generally, artificial turf is safe for pets. When choosing a pet turf, you will want to ensure that your manufacturer provides pet turf that is safe, durable, and accommodates all your landscaping needs.

**SYNLawn pet grass systems go above and beyond to provide your pet with the cleanest and most durable alternative to natural grass.** Our pet turf is

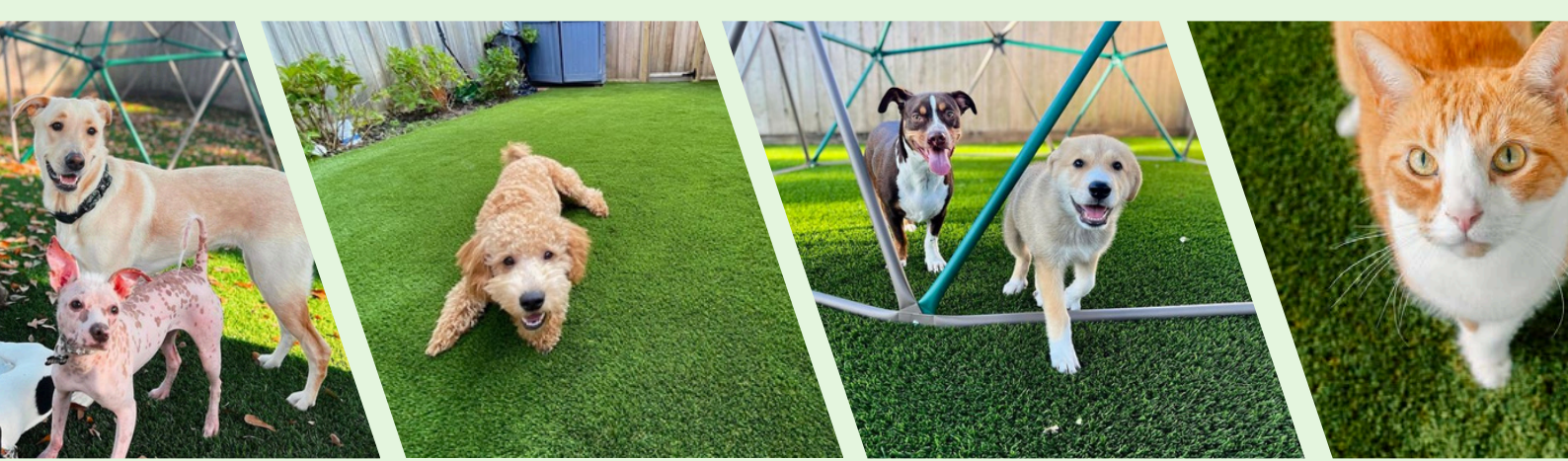
backed with the EnviroLoc+™ backing which secures your turf fibers and prevents pets from digging holes through the lawn.

It also includes our SuperDrain+™, which allows your installation to properly drain, preventing muddy paws and stains and odors caused by pet waste.

Additionally, our pet turf includes Super Yarn technology and features the highly effective Sanitized® antimicrobial to eliminate a substantial amount of bacteria from turf surfaces, help control pet odors, prevent stains, and keeps fleas and ticks at bay.

**NO MORE  
MUDDY PAWS**





## ODOR FACTOR

Pet areas with high foot traffic and frequent urination pose challenges for the natural grass. An effective turf solution from a reputable company should include a quality infill that eliminates pet odors. This feature is crucial for any pet turf installation to prevent the unpleasant experience of having a visually appealing lawn that carries undesirable smells.

**SYNLawn attacks odors from all directions.** Sanitized® silver-based antimicrobial technology helps eliminate pet odors and provides long-lasting protection. It works by eliminating bacterial odors and preventing the buildup of microbes on SYNLawn face fibers.

In addition, odor-controlling top-dressing (sometimes referred to as infill) is added to each pet installation, substantially reducing the odors caused by the ammonia in pet waste. We recommend using a 100% safe, environmentally friendly odor-absorbing infill like Envirofill®, that prevents ammonia from turning into a gas, thereby eliminating the smell. Our pet deodorizing top-dressing options also help keep the grass cool and will not clog drainage or deteriorate your grass.



### Why SYNLawn pet grass?

SUPERIOR DURABILITY

COOLER SURFACE TEMPERATURES

UNMATCHED DRAINAGE

ANTIBACTERIAL ENHANCED

STAIN & ODOR RESISTANT



## TIME & MONEY SAVINGS

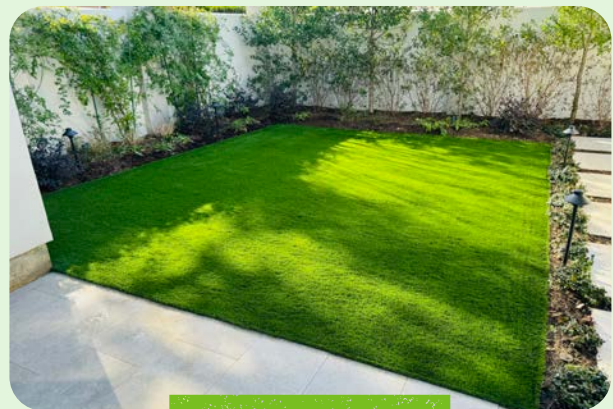
Large lawns and common areas can be extremely expensive to mow, fertilize, reseed, and water regularly. Artificial grass allows for serious time and money savings.

SYNLawn is not the cheapest turf on the market; however, it is easily the highest quality and most realistic. It is manufactured at our in-house facility in Dalton, GA. Here at our ISO-9001-certified facility, we have complete quality control at every stage of development to provide you with the highest quality and longest lasting synthetic turf on the market! **A higher quality and longer lasting turf will save you time, money, and stress in the long run and will provide a noticeable return on your investment.**

With SYNLawn® artificial grass, you will no longer have to spend money on reseeding, lawn equipment, or maintenance crews. You will also be happy to save up to 70% on your monthly water bill. With its exclusive technology and innovations, SYNLawn effectively eliminates traditional maintenance.



**BEFORE**



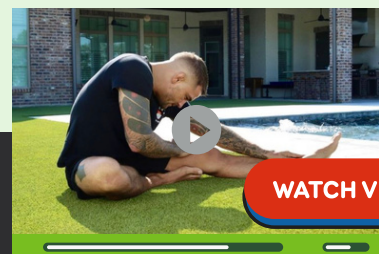
**AFTER**



Great experience with SYNLawn. The initial appraisal was quick and informative. Told me everything I needed to know but never seemed to try and push anything on me. Once the quote was accepted the project manager was extremely communicative and helpful before, during, and after install. The crew who installed the turf were pros and were able to complete my front yard in 1 day. The new lawn looks great. Highly recommend. - Luke C.



*Click video to watch UFC fighter  
Dustin Poirier's testimonial!*



## WARRANTY

If a limited lifetime warranty is not provided, it's best to look elsewhere. A reputable company confident in their product will offer such a warranty, protecting your investment and motivating the manufacturer to uphold a higher standard of product quality. Additionally, many turf companies only offer a warranty on their turf and not on their installation. If there is a flaw in their workmanship, there is little-to-no assurance that the flaw will be repaired without a workmanship warranty.

**At SYNLawn, not only do we offer an unmatched limited lifetime warranty on the turf, but we also offer a 1-year installation warranty on workmanship.** We are so confident in our ability to perform with excellence that we have no problem covering you.

## REFRESH PROGRAM

Let's face it, when investing money into your home and landscape, nobody wants to choose a company that disappears forever once the job is done. What happens if you need a repair or want to get your turf cleaned in time for an event or Spring barbecue? When researching artificial grass providers, we highly recommend choosing a company that is fully dedicated to long term customer care. This can be done by offering additional services beyond the warranty such as an artificial grass refresh program.



**At SYNLawn, we are fully committed towards providing our customers with long term assistance by offering the Refresh Program!**

We are one of the only turf companies in the industry to offer such a service, so we can help protect your investment and ensure longer lasting luxury. If you need a repair, we got you covered! If you need your turf cleaned or lawn prepped for an at-home event, we also got you covered! We aim to create lasting relationships with our customers so you can give us a call with questions, concerns, or maintenance needs.



**SYNLawn truly exceeded my expectations! The team at SYNLawn came out to refresh the turf they installed for me about 7-8 years ago. The results are incredible – my turf looks as good as the day it was first installed, if not better! The team was professional, efficient, and their attention to detail was commendable. I couldn't be happier with the outcome. Highly recommend SYNLawn for anyone looking for top-notch turf solutions! - Derrick C.**







## MADE IN THE USA

It is highly recommended to purchase turf made in the USA. Unfortunately, internationally manufactured turf companies cut major corners during the manufacturing process to sell their turf cheaply. This results in poor product quality and the utilization of unhealthy materials and components.

**At SYNlawn, we manufacture all our premium turf in the USA at our own facility in Dalton, Georgia.** This allows us to ensure the highest quality standards and maintain the most eco-friendly manufacturing principles at every stage of product development.

## BIO PREFERRED PROGRAM

**SYNLawn is part of an ongoing USDA initiative to increase the development, purchase, and use of bio-based products.**

As of 2024, 10 of SYNlawn's biobased systems have earned the U.S. Department of Agriculture (USDA) Certified Biobased Product label. The USDA Certified Biobased Product label communicates a product's biobased content. More than 3,500 products have earned the USDA Certified Biobased Product label, but SYNlawn is the first and only in the artificial grass industry to earn this certification.

**SYNLawn extends this biopreferred initiative globally to further the advancement and application of biobased products.**



## PRICING

Why can pricing vary so much between artificial turf companies? The two most prominent reasons are product quality & installation practices. Price will vary depending on the type of turf, the size of the install, and the required prep work.

**The only way to receive an honest estimate is to schedule a free consultation with a sales rep, so they can take measurements, examine the terrain, and review samples.**

Cheapest usually means cheap quality, unrealistic appearance, and may lead to more stress down the road. You may end up disappointed and ultimately have to replace your turf within a couple of years due to the lack of durability and tendency to fade.

Consider all the factors when shopping so you can make a well-informed decision.

**We offer hassle-free financing options for both commercial & residential customers.**

We work with Wells Fargo for residential and PNC for commercial financing, so one can buy today and pay over time. We offer competitive financing options and affordable monthly payment plans to make your dream a reality. Just imagine all the money you will save by having a high quality and professionally installed artificial lawn.



## BUY NOW AND PAY OVER TIME!

A SYNlawn credit card through Wells Fargo is a convenient way to pay for goods & services. Plus, cardholders can enjoy other great benefits throughout the year, such as:

- Revolving line of credit that you can use for future purchases
- Convenient monthly payments to fit your budget
- Easy-to-use online account management and bill payment options
- Special terms promotions may be available to you on qualifying purchases if your application is approved.

**Speak to your local rep for more info on our promotional offers & financing options.**

## ESTIMATED PAYMENT OPTION EXAMPLE:

**\$10,000 for only \$132 per month, \$0 down on approved credit.**

\*Financing options will vary per individual.







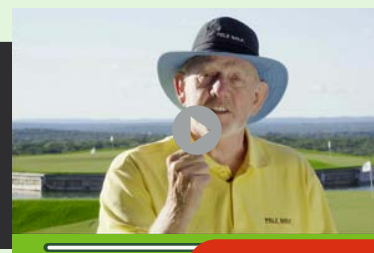
## PERFECT FOR **PUTTING GREENS** AND FAMILY FUN!

There is an abundance of golf turf manufacturers in our industry. However, traditional putting greens often overlook the importance of quality materials and performance-based installation techniques that create an authentic experience for all.

Collaborating closely with legendary short game coach and former NASA physicist Dave Pelz, SYNlawn excels at crafting PGA-caliber golf greens. Leveraging Dave's coaching experience with professional golfers like Phil Mickelson, we've developed golf turf that delivers **a lifelike putt, authentic ball roll, and natural energy absorption to provide a natural ball bounce and slow down characteristics.** Our golf greens boast a pro-level Stimpmeter rating of up to 12 and offer complete customization with options for fringe, fairway, and rough surfaces. We can also install tee boxes, chipping mats, bunkers, sand traps, tee lines, LED cup lights, golf simulators and more.

**SYNLawn golf greens are perfect for all ages and skill levels, and they are a great social tool for barbecues, backyard events and everyday family fun!** Turn your backyard into the ultimate hangout spot with SYNlawn putting greens.

Click the **video icon** to watch **Dave Pelz's testimonial!**



**WATCH VIDEO**



### GREENSMAS<sup>TM</sup> CERTIFICATION

**The difference between SYNlawn and other golf green installers is we are all SYNlawn GreensMaster<sup>TM</sup> certified!**

What does this mean?

The SYNlawn GreensMaster<sup>TM</sup> certification program was developed to ensure the highest standards of craftsmanship, design principles, and engineering specifications in synthetic golf green installations.

# THE IMPORTANCE OF A GREENSMASTER™ CERTIFIED INSTALLER



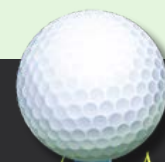
The GreensMaster™ Certification Program offers incomparable value and confidence to customers looking for the absolute best workmanship and quality when it comes to the construction of their putting green or golf practice facilities. Here's why the GreensMaster Certification matters and why choosing a SYNLawn GreensMaster Certified installation expert is essential for any serious golfer.

## A SYMBOL OF QUALITY AND EXPERTISE.

SYNLawn, the worldwide leader in synthetic grass putting green surfaces and installations, has meticulously crafted this program to ensure our installation experts are proficient in a range of categories critical to delivering a world-class, realistic-performing golf installation. These categories include:

- **Landscape Integration and Site Design Principles:** Ensuring the putting green fits naturally into its surroundings.
- **Elevated Base and Advanced Surface Prep:** Laying the foundation for the ultimate performance and playability.
- **Radius Fringe Cuts and Precision Seaming:** Crafting the edges and seams with utmost accuracy.
- **Realistic and Challenging Slopes, Breaks, and Undulations:** Mimicking the real challenges of a championship golf course.
- **Elements of Practice, Cup Setting/Location and Installation:** Adding the details that allow you to improve your game and have fun doing it.
- **Proper High-Performance Top Infill:** Critical for the longevity and performance of the green.
- **Using the Highest Quality Consumables, Materials, and Accessories:** Ensuring that only the best materials are used for a premium finished product.

## Why Choose GreensMaster Certified Installers?



ENHANCED GOLF EXPERIENCE

CUSTOMER SATISFACTION

QUALITY ASSURANCE

LONGEVITY & VALUE

TRUSTED EXPERTS





## THE SAFEST **PLAYGROUNDS** FEATURE SYNLAWN PLAYGROUND TURF!

There are several things to consider when choosing a playground surface for your school, backyard, church, or municipality. Considerations include whether or not the surface is made in the USA, free of lead and other heavy metals, offers considerable safety features and durability, is IPEMA certified, ADA compliant, and offers protection against fires.

SYNLawn was the first to acknowledge the necessity for IPEMA-certified artificial turf. We provide the safest synthetic turf on the market, designed to prevent typical injuries and abrasions while offering a cushion for falls of up to 10 feet. Our turf maintains stability upon impact, facilitating smooth wheelchair movement and ADA compliance. We guarantee that all our playground turf installations adhere to rigorous safety standards and fulfill various fall height attenuation criteria.

Similarly to other turf options, SYNLawn premium playground grass is manufactured in the USA and is free of lead and other heavy metals. We also offer a collection of Class A fire rated playground turf options for superior fire safety at any playground. Additionally, we can add 2-inch-thick subbase shock padding that provides further shock absorption and safety. **SYNLawn playground systems are the cleanest, safest, and most visually appealing substitute for materials like wood chips, sand, and rubber flooring.**

Click the **video icon** to watch our playground video!

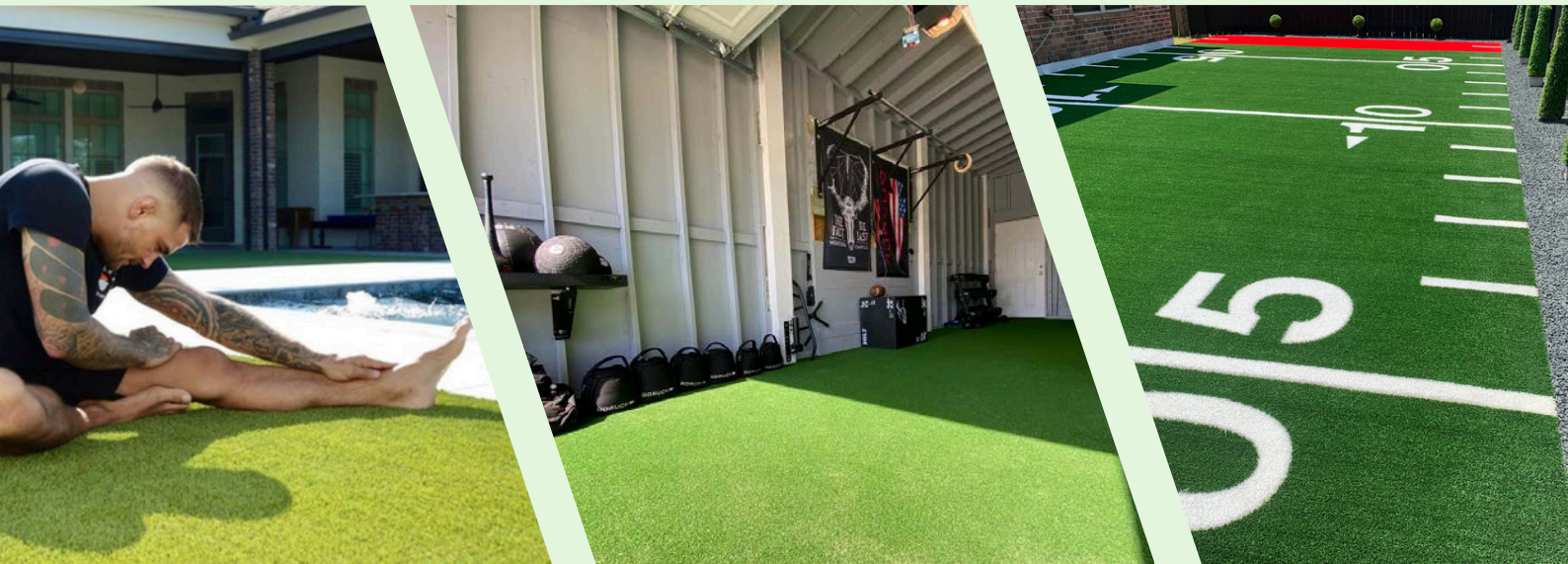


WATCH VIDEO



To verify product certification, visit [www.ipema.org](http://www.ipema.org)





## SPORT SURFACING AND ATHLETIC FIELDS

**SYNLawn sport turf and athletic fields are engineered to increase athletic performance, prevent common injuries, clean with ease, and are fully customizable.**

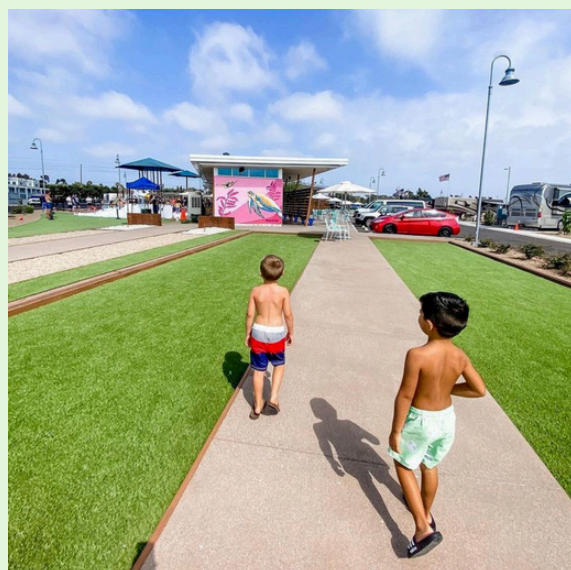
Perfect for home gyms and backyard athletics! Ideal for strength and agility training, sled pulls, indoor shot-put/hammer training, cross-training, gym floors, weightlifting areas, indoor and outdoor batting cages, soccer and football fields, tennis courts, baseball diamonds, aerobics and more. Talk to your local sales rep for more information!

Our athletic turf also includes our revolutionary HeatBlock technology, which has been scientifically proven to reduce turf temperatures by as much as 20% when compared to similar synthetic turf products. We can customize your athletic fields with a variety of turf colors and can add team logos, field lines, goal boxes and more. The increased durability and playability of our athletic turf means fewer injuries and broader access year-round.

## BOCCE BALL COURT SYSTEMS

**SYNLawn SYNPro Bocce surface provides advantages over conventional oyster shell surfaces without sacrificing performance.**

SYNPro Bocce features our HeatBlock technology and EnviroLoc+ backing system to provide cooler surface temperatures, enhanced durability, and is installed on concrete base over aggregate to create a uniform texture with a one-degree pitch to allow for optimal drainage and playability.





# THE IMPORTANCE OF PROPER INSTALLATION TECHNIQUES

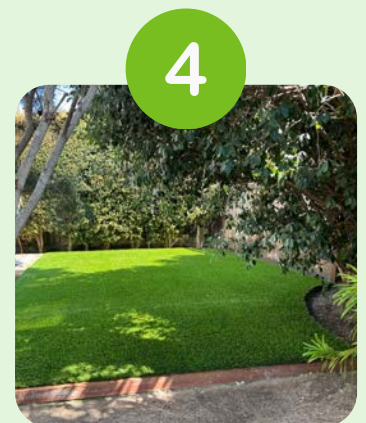
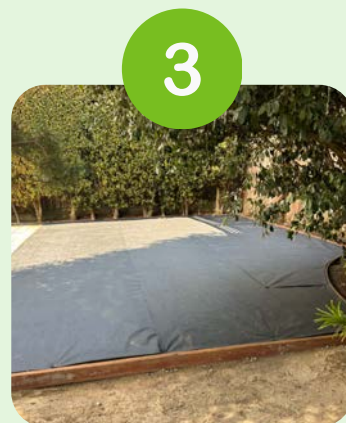
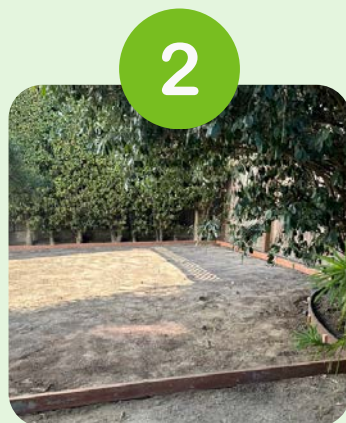
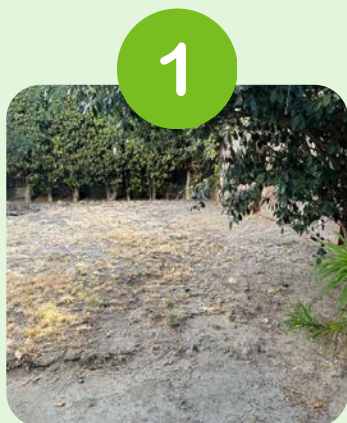


The installation process significantly influences the overall cost, with particular emphasis on establishing the right foundation for your project. **Adequate preparation is crucial, as it plays the most pivotal role in ensuring a smooth and comfortable walking surface on your turf.** Prep work can vary depending on the location and climate, and incorrect preparation can result in an uneven feel. For example, a proper gradient is essential to prevent water stagnation, as opposed to achieving optimal flow and drainage with a well-designed grading system.

## PROPER BASE

Ensure thorough preparation before installing artificial grass. Inquire about the measures taken to guarantee a soft texture and effective drainage, mirroring the qualities of natural grass. A reputable company, for example, will clearly explain the use of sand and quarter-minus in establishing a durable foundation for long-lasting results. Just as you wouldn't lay carpet without a sturdy base, it's imperative to prioritize groundwork for artificial grass installation. If a company claims no groundwork is necessary, it is advisable to continue your search.

**At SYNLawn®, our installation is meticulous.** We want to ensure a soft cushion, optimal drainage, and we want your lawn to last a lifetime. Our team of expert installers undergoes regular training to ensure that our standard of quality never drops. We start by smoothing out your base to remove any rocks or other debris. Without this step, you run the risk of creating tripping hazards or bumps in your turf. We then install necessary borders or bender board as well as gopher mesh or weed barrier depending on your unique landscaping needs. We then install each panel of turf in the same direction to ensure the highest level the realism. Finally, we check to make sure that there are no visible seams or wrinkles in your landscape and that it is secure for the long term.





## SHADED AREAS

Shaded areas rarely look lush and beautiful with a real lawn because the grass can't receive the sunlight it needs to grow properly. Artificial grass allows for a perfect lawn all the time. It is weather-independent and will remain beautiful year-round.



## MOUNDING

Incorporating mounding can enhance the aesthetic appeal of any landscape. Artificial grass simplifies the addition of mounds to your project, facilitating the creation of dynamic and engaging landscape designs that encourage playful activities. In commercial or public spaces, these mounds also serve as a deterrent to homeless behavior by preventing the pitching of tents. However, the practicality of maintenance is once again a driving factor in the choice of artificial turf for such areas.

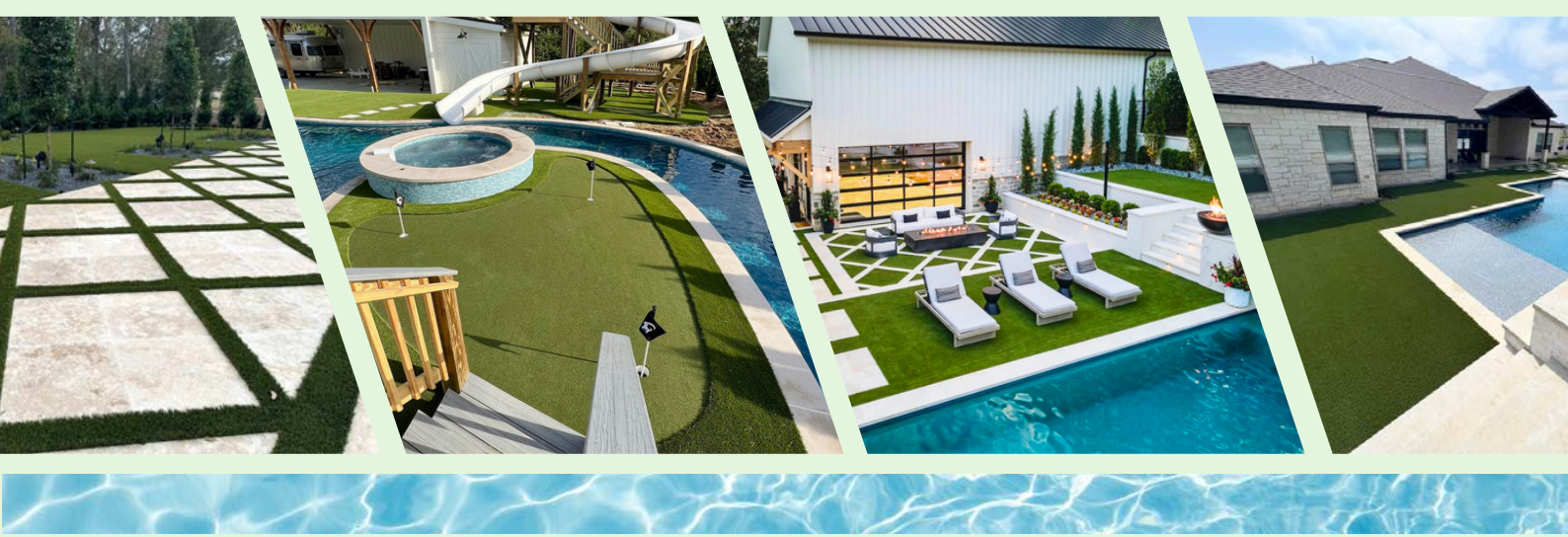


## SLOPED AREAS

Managing sloped areas with natural grass can pose considerable challenges, leading to headaches and maintenance difficulties. These lands are often inaccessible or extremely challenging for conventional lawnmowers. The uneven topography can result in water runoff and pooling in the valleys, leading to a substantial muddy mess. SYNlawn artificial turf is designed with great versatility. During our installation process, we make certain that your turf effortlessly blends into the existing features of your landscape, creating new depth and allowing you to fully express your creativity.







## POOL DECKS & SURROUNDINGS

Artificial grass has transformed pool decks and surrounding areas, offering enhanced aesthetics and functionality, superior safety, superior cleanliness and more!

One key advantage is its low maintenance. Unlike natural grass, artificial turf stays lush year-round with minimal upkeep, making it perfect for high-traffic poolside landscapes.

Additionally, artificial grass offers superior drainage, preventing puddles and mold formation. It withstands water, chlorine, and sunlight exposure without fading, ensuring durability and lush poolside lawn spaces. No more mud or lawn clippings in the pool!

Its versatility allows for customized landscapes, easily installed on various surfaces. Synthetic turf complements pool architecture, creating visually appealing spaces.

SYNLawn artificial grass revolutionizes pool areas with its lush and vibrant aesthetic, low maintenance, excellent drainage, and design versatility when accompanied by pavers and putting greens. It provides a durable, attractive, and long-lasting solution for pool decks and surrounding landscapes.



# SO, WHERE DOES SYNLAWN RANK IN ALL THIS?

Features & Benefits	SYNLawn®	The Other Guys
Manufactured PFAS-Free	✓	Some
Made in the USA	✓	Some
Made from Plant-based Materials	✓	
True-to-Life Look & Feel	✓	Some
Incredible Durability & Toughness	✓	
EnviroLoc+ Backing System	✓	
Super Yarn™ Technology	✓	
Anti-Microbial Enhanced Fibers & Backing System	✓	Some
UV Resistant	✓	Some
HeatBlock™ Technology	✓	
SuperDrain+™ Technology	✓	
Stain & Odor Resistant	✓	
ASTM Class A Fire Rating	✓	Some
IPEMA certified & ADA compliant	✓	Some
PGA-Caliber Putting Greens	✓	Some
GreensMaster Certified Golf Green Installers	✓	
Limited Lifetime Product Warranty & 1-Year Workmanship Warranty	✓	
Long Term Customer Care & Refresh Program	✓	
Affordable Monthly Financing	✓	Some



# WHAT OUR CUSTOMERS ARE SAYING:



This has to be the best addition to our home. SYNLawn has definitely made our backyard, the hangout spot of the neighborhood.

From the beginning, Sales Rep. Brandon was upfront and honest. He did an amazing job showing us several designs and allowed us to customize the plans ourselves. From there, it just got better. Project Administrator Cizzi walked us through the purchasing process. And then the fun really began. Install Crew Leader Roberto "Beto" and his crew just went to work and knocked out the plans in less than five days. We were just amazed at the final product. I will pass the word on to everyone I know looking for a fun and clean project for their backyard. We have played on this mini-golf layout every day since it was finished. - Vladimir P.



If I can describe my experience with SYNLawn Sacramento with one word, it would be AMAZING!

From start to finish, it has been nothing short of. Mario was our sales rep and he was great. Very professional, upfront and honest. We have an HOA and he was very thorough with getting them the necessary samples and paperwork for approval. He was consistent with following up on the HOA approval process, install and checking in afterwards if we were satisfied with everything.

Vivian, our project manager was just as thorough. She also very patient and kind. We had to keep rescheduling our install due to HOA approval delays and increment weather. She was always such a pleasure to speak with. She made the booking and payment process very easy. Our install team, led by Roberto, were quick and professional. I was very impressed with how fast the install took. Ours was a bigger project so it took 3 days but the results are amazing. The turf looks real.

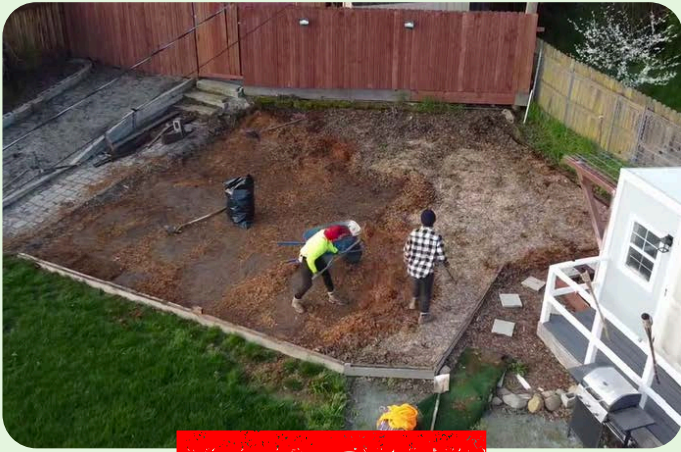
We've had people stop their cars and tell us that it looks great! We couldn't be more happier!  
- Giselle M.



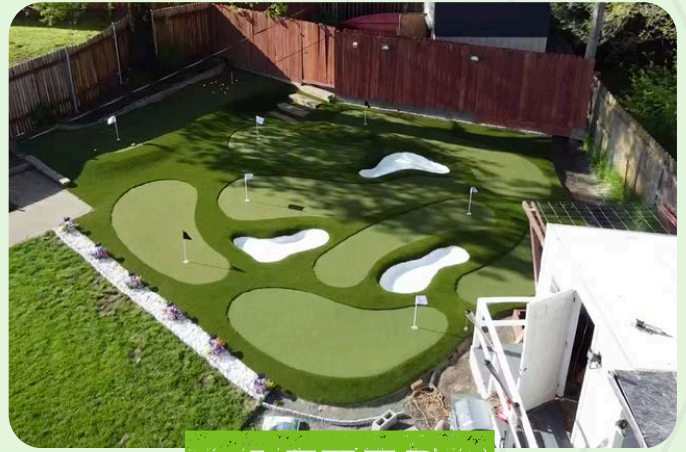
So I decided to go with artificial turf for my backyard. Vivian from SYNLawn reached out to me immediately and we scheduled an appointment for a free consultation. Mario came out, gave me an estimate and his crew came out and they installed the artificial turf in one day. They did an amazing job and left my backyard cleaner than how it was before they started the project. - Davy S.







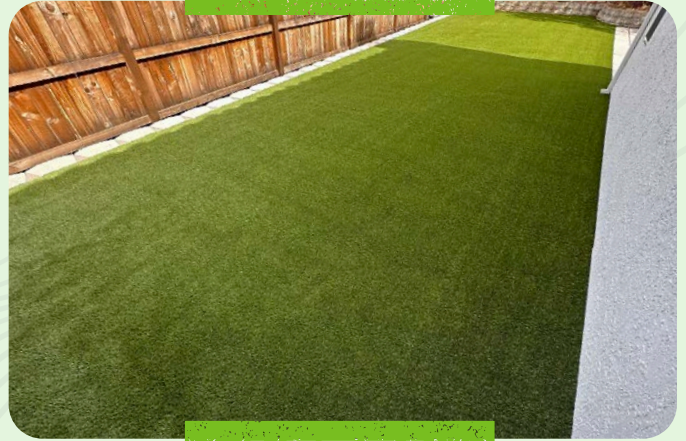
**BEFORE**



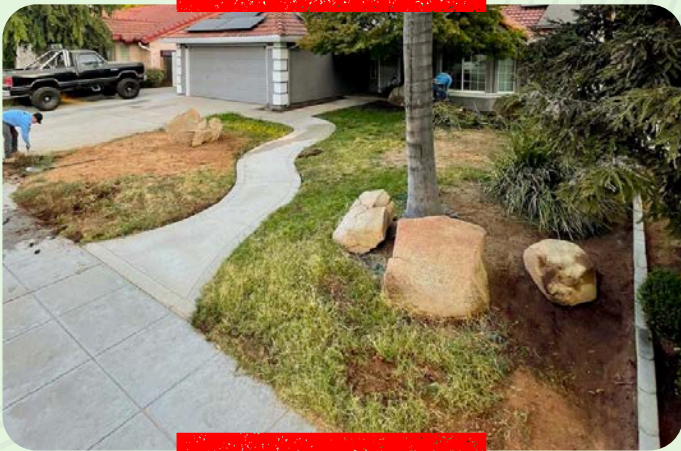
**AFTER**



**BEFORE**



**AFTER**



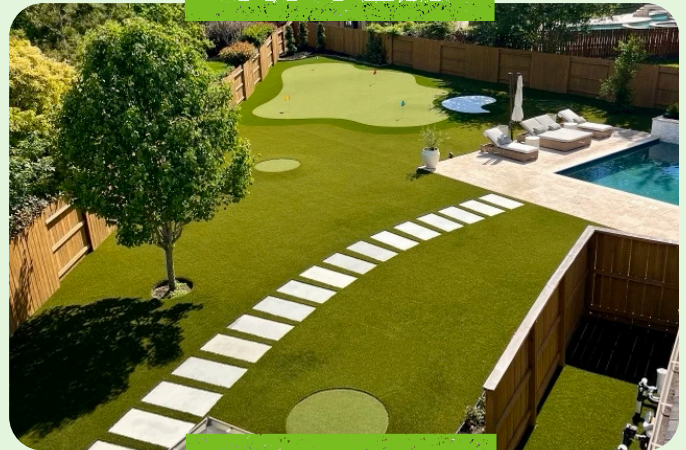
**BEFORE**



**AFTER**



**BEFORE**



**AFTER**



# CONTRACTORS + ARCHITECTS



We are available to you as a resource for samples, CADdetails files, Lunch & Learns, Free AIA-accredited (American Institute of Architects) continuing education (CE) courses and more!

GET A **FREE ARCHITECT KIT** FOR YOUR OFFICE!

**The one kit to solve it all.**

**Your toolkit to artificial grass surfacing.**

The SYNLawn Architectural Kit has everything you need to get started – from turf samples to sustainable infill samples.



DOWNLOAD OUR  
CADDETAILS FILES

[CLICK HERE](#)

## ARCHITECT KIT INCLUDES:

TURF SAMPLES



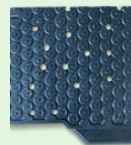
INFILL OPTIONS



AIR DRAIN



ULTRABASE



BROCK



NAILER BOARD



MELOS STONE

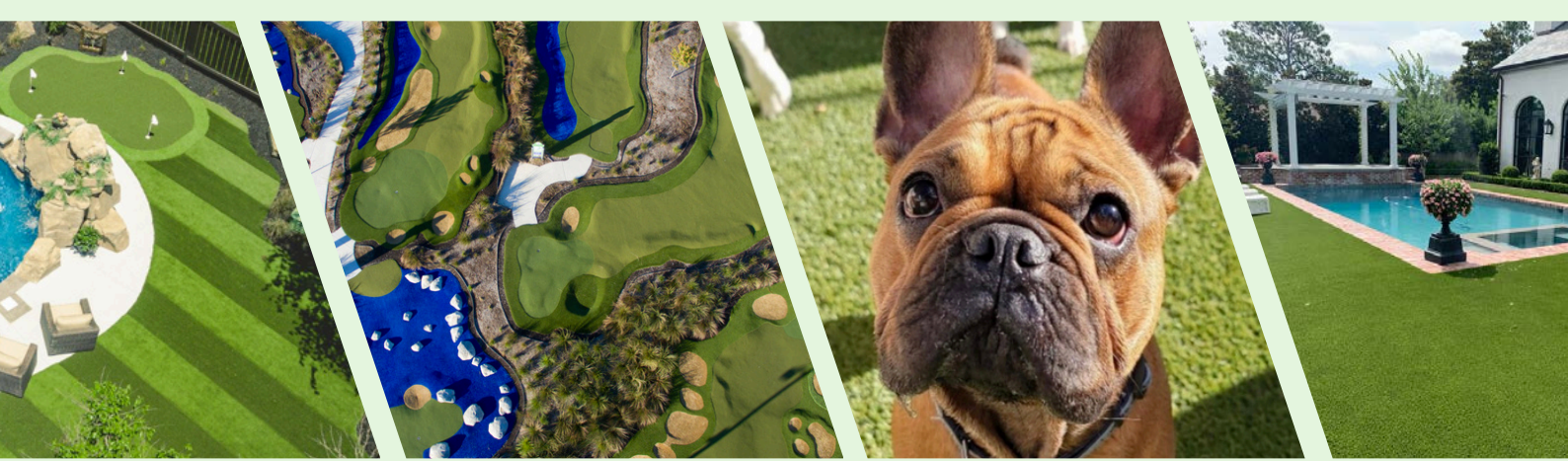


COMMERCIAL BROCHURE



## LUNCH & LEARN WITH SYNLAWN





LANDSCAPE 🌿 PETS 🌿 GOLF 🌿 PLAYGROUND 🌿 ROOFDECK

*Are you ready to get started?*

**SCHEDULE A FREE CONSULTATION TODAY!**



[www.synlawnsacramento.com](http://www.synlawnsacramento.com)

(866) 970-3076

[3920 W Capitol Ave #160, West Sacramento, CA 95691](https://www.synlawnsacramento.com)

*Follow Us on Social Media:*



UP TO 70%  
WATER SAVINGS



PLANT BASED &  
RECYCLABLE



USDA  
CERTIFIED



LOW MONTHLY  
PAYMENTS



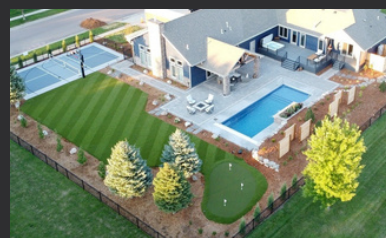
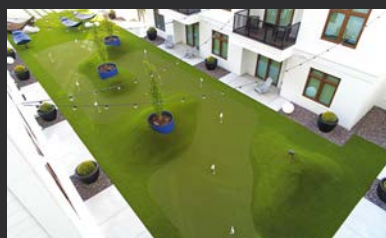
UNRIVALED  
REALISM



PROUDLY  
MADE IN THE USA



MANUFACTURED  
PFAS FREE





# ARTIFICIAL GRASS BUYER'S GUIDE

Copyright ©, SYNlawn Sacramento, 2024

All rights reserved.

Any reproduction of this written work, in part or in whole, is prohibited without the written permission of the publisher.

For more information, contact the publisher.  
[www.synlawnsacramento.com](http://www.synlawnsacramento.com)